

# NORTHWIND ARTS CENTER & NORTHWIND ARTS ALLIANCE

2409 Jefferson St., Port Townsend, WA 98368

Hours: Noon – 5:00 pm Thursday – Monday Phone: (360) 379-1086

“Connecting the Arts and Community”

## JULY 2008 NEWSLETTER

More information on these activities can be found at our website at [www.northwindarts.org](http://www.northwindarts.org)

### GALLERY HAPPENINGS

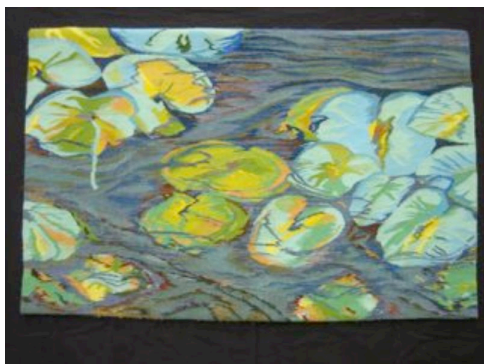
**Northwind Arts Center's July exhibition** will feature the work of two Port Townsend artists, **Bill Curtsinger and Inge Norgaard**.



**Bill Curtsinger**, a photographer who moved to Port Townsend in 2006, specializes in underwater and natural history subjects. During the Viet Nam War he was a member of the elite navy Photo Unit, Atlantic Fleet Combat Camera Group. He is also a graduate of the U.S. Navy Dive School and has photographed 33 articles for national Geographic Magazine. Other photographs and stories have appeared in Smithsonian, Outside, Time, Newsweek, Audubon, Geo, Paris Match and many others.

He is a founding member of the Maine-based art group “10x10” and a founding member of Port Townsend's printmaking cooperative, Corvidae Press. His latest book, “Extreme Nature-Images from the World's Edge” is a 400-page retrospective of his work. It was published in nine languages and in 11 countries in 2005.

**Inge Norgaard** was born and raised in Denmark where she studied printing and graphic design and then turned to weaving, apprenticing with some of Denmark's most renowned weavers.



In 1981 she came to Port Townsend with her American husband and has exhibited in many American venues as well as internationally. Norgaard says that as she grows older she has broadened her artistic life and has been doing work in mixed media, painting, printing and carving. She is also a member of Corvidae Press. “One almost becomes euphoric with so many choices,” she says, “the point, however, is to sharpen the way in which to express myself.”

The show will include photographs and prints by Curtsinger and an assortment of work by Norgaard, including her tapestries. The show opens on **Friday, July 5** and runs through **Sunday, July 27**.

**Please come to meet the Artists during Gallery Walk on Saturday, July 6** from 5:30 to 8 pm at the Northwind Arts Center located at 2409 Jefferson Street in Port Townsend.

There will be a **Coffee Talk** with the artists on **Wednesday, July 11** at 7 pm at the Northwind Arts Center.

## **POETRY NEWS**

### ***Tidepools* Winners Read**

**On Thursday, July 10**, Northwind Reading Series showcases *Tidepools 2008*, the annual art and literary magazine produced by students of Peninsula College. The group reading starts at 7 pm in the Northwind Arts Center, 2409 Jefferson St.

Works appearing in *Tidepools*, currently in its 44<sup>th</sup> year, are submitted via a juried contest that is open to aspiring writers and artists of the North Olympic Peninsula community, whether amateur or professional. This year, the youngest person submitting work was six years old and the oldest was eighty-six.

Cash prizes were awarded in 11 categories. This year's winners are, for adult prose: Donna Morris, Morgayne Christy, Mary-Alice Boulter; adult poetry: Tim Roos, Jerry Kraft, Sarah Zale; adult art & photography: Sheila Hunt-Witte, Jim Quattrocchi, Joan Cole; Peninsula College student writing: Rebecca Horst, Thena Westfall, Laura Knight; Peninsula College student art & photography: Nolah Leh, Lois Krimm, Patricia Huff; youth writing ages 6-9: Michael Easley; youth writing ages 10-13: Maeve Harris; youth writing ages 14-17: Annie Young; youth art & photography ages 6-9: Sophia Easley; youth photography ages 10-13: Pablo Van Renterghem; youth art & photography ages 14-17: Erin Pallai.

Janet Lucas, *Tidepools* faculty advisor, will be master of ceremonies for the evening's group reading and art exhibition, which is free and open to the public. Donations are gladly accepted to support Northwind, a nonprofit organization dedicated to connecting the arts to our community.

### **Port Townsend Writer's Conference**

**Wednesday, July 16** from 7:30 to 9 pm writers from the Port Townsend Writers' Conference read from their work. For more than three decades, aspiring writers, readers, translators, and editors have come to the Conference to immerse themselves in the writing life. The downtown reading marks the first partnership event between the Writers' Conference and Northwind Arts Center. All donations go to benefit Northwind.

The Port Townsend Writers' Conference has been since 1973 the center of the thriving Pacific Northwest literary scene, contributing to the development of such literary figures as Bill Stafford, Ken Kesey, James Welch, Alice Walker, Richard Hugo, Terry Tempest Williams, and many, many others who made breakthroughs in their creative development through residencies, writing workshops, and readings.

**Bill Mawhinney**, Coordinator

**Here is the Northwind Reading Series schedule July through December:**

**July 10: TIDEPOOLS Readers**

**August 14: Pat Austin & Nan Toby Tyrell**

**September 11: Peter Pereira & Rebecca Loudon**

**October 9: WINDFALL Readers: Bill Siverly & Michael McDowell**

**November 13: Judith Kitchen & Jennifer Culkin**

**December 11: READERS' PARTY**

## **ART PORT TOWNSEND**

### **A Festival of the Visual Arts**

**2008 EXPRESSIONS NORTHWEST/ART PORT TOWNSEND JURIED SHOW.** Northwind Arts Alliance and the Port Townsend Arts Commission announce the 10<sup>th</sup> Annual Juried Art Competition, **October 3-26, 2008.** The juror is Barbara Shaiman, Director of the Seattle Art Museum's SAM Gallery, Art Sales and Rental, for the past 18 years. She is also curator of the Alexis Hotel in Seattle. As a juror, she looks for "artwork that has a strong visual appeal and is rooted in ideas I find compelling, stimulating and challenging". Entry deadline is August 11. Click below for the Juried Show Prospectus.  
<http://artporttownsend.org/aptjuried2008.pdf>

**WEARABLE ART FASHION SHOW.** Northwind will be sponsoring a Wearable Art Fashion Show **Thursday, October 23** at 1 pm at Market Place Gallery in Port Townsend. The committee working on the show is looking for volunteers to help with various tasks leading up to the show and during the show. It promises to be lots of fun. If you are interested, contact Anne Schneider at (360) 379-8752. For additional information, go to the Art Port Townsend website at <http://artporttownsend.org>

## **KALEIDOSCOPE SUMMER ARTS CAMP**

In just a few weeks, dozens of Jefferson County youth, ages eight and up, will arrive at Kaleidoscope Summer Arts Camp to spend a week taking classes in the arts. Campers select from a broad range of classes in visual art, creative writing, theatre, dance, and music. They attend four classes each day for an entire week to gain skills and experience in their chosen art forms.



Kaleidoscope is held at Blue Heron Middle School. This year the eight to ten-year-old campers will attend from July 14–18, and youth, ages eleven and up, will attend from July 21–25. Local teaching artists share their art form with the students, encouraging them to experiment, take risks, and have fun. For a complete listing of teaching artists and classes offered this year visit the Kaleidoscope website:  
[www.kaleidoscopeyoutharts.org](http://www.kaleidoscopeyoutharts.org)

Kaleidoscope receives major sponsorship and support from US Bancorp Foundation, Frederickson Electric, Tim and Lucy Harrington, Port Townsend Rotary Club and additional support from other local organizations, businesses and individuals.

## **2008 WORKSHOP SCHEDULE**

**NORTHWIND** is sponsoring three **great workshops in July and August.** If you are interested, **please let us know now.** **GEN ASHFORD'S SUMI WORKSHOP** on July 14-15 will be of particular interest to watercolor artists who wish to work on their brushstrokes.

**DEE BOYLE'S PLEIN AIR PAINTING**, scheduled for August 2-3, will be inspiring for oil and acrylic painters. Boyles, an experienced instructor from Oregon, will need to have students registered by mid July or the class will be cancelled.

We have also added a new workshop, **BATIK, WITH SAKURA DAVIS**, on August 9 and 16. Check the Workshop schedule below for further information or call Jeanette Best at (360) 437-9579 or at [jbest@cablespeed.com](mailto:jbest@cablespeed.com)

**"AN INTRODUCTION TO SUMI PAINTING" with Gen Ashford**; July 14-15 at the Fairground's Art Building. Cost: \$130 (Volunteers \$100). Students will learn to handle their brush, the ink and paper in this introduction to Sumi painting. Beginners and those who have experience are welcome to the class.



Sumi artist Genevieve Ashford began her love affair with brushwork through living and traveling through Thailand and Africa. "Most of my painting is in a minimalist style, distilling principles of life and nature to as few brushstrokes as possible. I strive to bring the life force, or Chi, to my work in a spontaneous way."

The art of Sumi painting dates back to 700 AD, evolving from Chinese brush calligraphy. Fresh ink is made anew every time the artist sits down to work. Grinding the ink is a relaxing, meditative process, which helps the painter settle their mind before beginning to create a work of art. Gen Ashford has been painting in the Sumi style for 15 years and has studied with several prominent artists including Elizabeth Kincaid, Andrew Chinn, Priscilla Maynard and Fumiko Kimura. Gen currently teaches Sumi painting at West Seattle Senior Center. She has been a member of Puget Sound Sumi Artists since 1993. For more information, please contact Jeanette Best at (360) 437-9579 or <mailto:jbest@cablespeed.com>

**"PLEIN AIR PAINTING" (Oil & Acrylic) with Dee Boyles**; August 2-4 from 10 to 4 pm at the Fairground's Art Building. Cost: \$130 (2 days) or \$175 (3 days). This plein air workshop can be taken as a two or three day event. Mr. Boyles will provide verbal instruction and demonstrations. Emphasis will be on oil painting although much of the information will be applicable to the use of acrylics. Painting landscapes is Dee Boyle's passion and he will inspire each of the participants. Please contact Judy Courtwright at (360) 379-4037 or [judy@judycourtwright.com](mailto:judy@judycourtwright.com)



**"BATIK", with Sakura Davis**; August 9 and 16. More information, when available, will be placed on the website at <http://northwindarts.org/news/workshops/> For more information, you may contact Jeanette Best at (360) 437-9579 or <mailto:jbest@cablespeed.com>

**"ASSEMBLAGE" with A.K. Anderson**; September 15-16 from 10 to 4 pm Jefferson County Fairgrounds Art Building, Port Townsend. Cost: \$130 (Volunteers \$100). You may begin preparing for Kim's workshop by gathering a few interesting wooden boxes or small drawers (12" max.) with a 2 to 5" depth. Shadow box frames may be used. As a participant, you will take home one or more pieces of assemblage art graced with your own collection of intrepid objects. Ms. Anderson is a graduate of Seattle's Burnley School of Art. She is a frequent participant in juried shows and has received many awards. Please contact Jeanette Best at (360) 437-9579 or [jbest@cablespeed.com](mailto:jbest@cablespeed.com)



**For more information, registration forms and supply lists** for each workshop, go to our website at <http://www.northwindarts.org/news/workshops/>

**Janet Lynch, Newsletter Editor**