

NORTHWIND ARTS CENTER & NORTHWIND ARTS ALLIANCE

2409 Jefferson St., Port Townsend, WA 98368

Hours: Noon – 5:00 pm Thursday – Monday Phone: (360) 379-1086

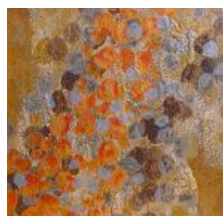
“Connecting the Arts and Community”

JUNE 2008 NEWSLETTER

More information on these activities can be found at our website at www.northwindarts.org

GALLERY HAPPENINGS

Stacie Chappell, Monroe, and Melanie Boone, Marsha Slomowitz and Stephen Yates from Port Townsend, will share the Northwind Arts Center in an exhibit titled "**Cross Pollination**" from June 6 to June 30. They all deal with organic, nature-based imagery in abstract ways, and represent the cross-pollination of ideas and imagery that are part of the contemporary zeitgeist. With four distinct views, they explore the mysterious world around us with references from microbiology to botany, from oceanography to astronomy. Images range from small etchings to a large multi-paneled painting 16' long.



Melanie Boone has been working in print making, collage and painting as an artist for more than 40 years and her works are found in numerous collections. "These recent paintings are a result of my fascination with the alchemy, color, texture, light and grace of water."



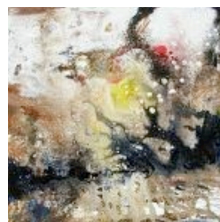
Stacie Chappell draws upon life experience as her main influence; a time, mood or memory. "The various types of paint media and surface treatments I use react differently, ultimately pushing the element of surprise as form and space develop." Her works are in many collections.



Marsha Slomowitz, who resides in Port Townsend, founded, in 2006, the printmaking guild, Corvidae Press, in association with

Centrum. She has received Centrum and Wurlitzer Foundation residencies and has shown work regularly in the Northwest since moving to the area. Central to her work is an exploration of the natural world and how we choose explain it—from mathematical, mystical, or ethnographic theory to the sciences of cellular structure and botany.

Stephen Yates has exhibited his work extensively



in the Northwest and at many other locations across the country. His work has been collected by a large number of organizations and private collectors. "I have an ongoing and long-term interest in the

idea of forms moving through atmospheres. My interest in botany resulted in paintings that emphasize the unseen energy of germination and growth; flower and leaf forms are immersed in bursts of flickering light and marks suggesting charged fields of wind-like movement."

Please come to meet the Artists during Gallery Walk on Saturday, June 7 from 5:30 - 8 pm at the Northwind Arts Center

There will be a **COFFEE TALK** with the **Cross Pollination** artists on **Friday, June 20** at 7 pm at the Northwind Arts Center.

AN ARTIST'S CHINA ADVENTURE

A Special Lecture Event

On Friday, June 13 at 7 pm, Northwind Arts Center presents an evening slide show of stone sculptor **Arless Newcomb's** explorations of art and stone workers in China. From Shanghai to Hungzhou to Xiamen and back. Hear about the people, the places, the food and, most of all, the hospitality.

POETRY NEWS

NORTHWIND READING SERIES will feature Ellie Mathews and Kathryn Hunt on June 12.

The readings will start at 7 pm in the Northwind Arts Center, 2409 Jefferson Street.

Ellie Mathews is a Northwest native. She lives with her husband in Port Townsend. After studying geography and working as a cartographer, she began writing in her late forties. She has won cooking and writing awards including the 2007 Milkweed Prize for Children's Literature; the 2005 Sutter Home Build a Better Burger Cook-off, alternative category; 2004 First Place for Short Fiction, Peninsula College Tidepools Competition; 1998 Grant from the Seattle Artists Program for Literary Artists; 1998 Grand Prize, Pillsbury Bake-Off; 1997 Fellowship, Fishtrap Writers' Conference.

Mathews' published work includes short fiction in Cricket and Cicada magazines; *The Ungarnished Truth: A Cooking Contest Memoir* (Berkley Books, 2008); *The Linden Tree* (Milkweed Editions 2007); and *Ambassador to the Penguins: A Naturalists' Year Aboard a Yankee Whaleship* (Godine 2003). Mathews' memoir was selected as a Book Sense Notable Book.

Kathryn Hunt is a writer and filmmaker and makes her home in Port Townsend. Her work has appeared in *Rattle*, *The Sun*, *Willow Springs*, *Crab Orchard Review*, and *Open Spaces*, among other magazines. She is a director and producer of documentary films, including *Take This Heart*, a feature-length documentary that was honored with the Anna Quindlen Award for Excellence in

Journalism. The film was broadcast nationally on PBS and had its U.S. premiere right here at Port Townsend International Film Festival, in the Rose Theatre.

Her film *No Place Like Home*, about a ten-year-old girl living with her family in hotels and homeless shelters, was broadcast nationally on the public television series *P.O.V.* and selected for screenings at the Venice Biennale/Venice Film Festival and at festivals in Cork, Lisbon, Melbourne, Sydney, Paris, and St. Petersburg, Russia, among others. She is currently at work on a coming-of-age memoir titled *The Province of Leaves*. When she's not at her desk she can be found in her garden, trying to stay ahead of the weeds and the deer.

The readings are free, with donations gladly accepted to support Northwind, a nonprofit organization dedicated to connecting the arts to our community.

Bill Mawhinney, Coordinator

Here is the Northwind Reading Series schedule June through December:

June 12: Ellie Mathews & Kathryn Hunt

July 10: TIDEPOOLS Readers

August 14: Pat Austin & Nan Toby Tyrell

September 11: Peter Pereira & Rebecca Loudon

October 9: WINDFALL Readers: Bill Siverly & Michael McDowell

November 13: Judith Kitchen & Jennifer Culkin

December 11: READERS' PARTY

2008 WORKSHOP SCHEDULE

"DEMYSTIFICATION OF WATERCOLOR" with



Jo-Neal Boic; June 9-10 from 10 to 4 pm at the Jefferson County Fairgrounds Art Building, Port Townsend. Cost: \$130 (Volunteers \$100). Jo-Neal believes that

watercolor requires a deep knowledge of the pigments, and that a lack of this knowledge can lead to disappointment and frustration. Students will go through a series of exercises that will provide the knowledge needed to understand the characteristics of the paints.

Jo-Neal taught high school art and painting for over twelve years. She studied art in Florence for a year and taught at a private International School, outside of Antwerp, Belgium. Last spring, she entered her first National Watercolor Society Members Show and took the Henri De Kreuf Award, second place overall. For more information, contact Virginia King at (360) 385-2026 or Gal4Fiber@cablespeed.com.

"BEGINNING SUMI" with Gen Ashford; July



14-15 at the Fair-grounds Art Building. Cost: \$130 (Volunteers \$100). Students will learn to handle their brush, the

ink and paper in this introduction to Sumi Painting. Beginners and those who have experience are welcome to the class. Gen has been a member of Puget Sound Sumi Artists since 1993 and has studied with Andrew Hoffmeister and Keith Monahan at Washington State University. For more information, contact Jeanette Best at (360) 437-9579 or <mailto:jbest@cablespeed.com>

"PLEIN AIR PAINTING" (Oil & Acrylic) with



Dee Boyles; August 2-4 from 10 to 4 pm at the Fairground's Art Building. Cost: \$130 (2 days) or \$175 (3 days). This plein air workshop can be taken as a

two or three day event. Mr. Boyles will provide verbal instruction and demonstrations. Emphasis will be on oil painting although much of the information will be applicable to the use of acrylics. Painting landscapes is Dee Boyle's passion and he will inspire each of the participants. Please contact Judy Courtwright at (360) 379-4037 or judy@judycourtwright.com.

"ASSEMBLAGE" with A.K. Anderson;

September 15-16 from 10 to 4 pm Jefferson



County Fairgrounds Art Building, Port Townsend. Cost: \$130 (Volunteers \$100). You may begin preparing for Kim's workshop by gathering a few interesting wooden boxes or small drawers (12" max.),

with a 2 to 5" depth. Shadow box frames may be used. As a participant, you will take home one or more pieces of assemblage art graced with your own collection of intrepid objects! Ms. Anderson is a graduate of Seattle's Burnley School of Art. She is a frequent participant in juried shows and has received many awards. Please contact Jeanette Best at (360) 437-9579 or jbest@cablespeed.com.

For more information, registration forms and supply lists for each workshop, go to our website at www.northwindarts.org

ART PORT TOWNSEND

A Festival of the Visual Arts

2008 EXPRESSIONS NORTHWEST/ART PORT TOWNSEND JURIED SHOW

Northwind Arts Alliance and the Port Townsend Arts Commission announce the 10th Annual Juried Art Competition, October 3-26, 2008. The juror is Barbara Shaiman, Director of the Seattle Art Museum's SAM Gallery, Art Sales and Rental, for the past 18 years. She is also curator of the Alexis Hotel in Seattle. As a juror, she looks for "artwork that has a strong visual appeal and is rooted in ideas I find compelling, stimulating and challenging". Entry deadline is August 11. Click below for the Juried Show Prospectus.

<http://artporttownsend.org/aptjuried2008.pdf>

CALL TO ARTISTS. Art Port Townsend invites all artists with public-accessible studios to join the **Art Studio Tour** this year, scheduled for October 11-12, 2008. Information and sign-up packets may be obtained from Susan Hazard, Studio Tour Chair, at (360) 379-0859 or susan.hazard@cablespeed.com. The deadline has been extended to June 15. This is your opportunity to meet your public, demonstrate your process, and advertise your work. **This year we have added to the schedule an art show** displaying representative works of each artist on the Studio Tour. The show opens the night of Art Walk, October 4, and runs through Studio Tour weekend, location of show to be announced. Join now!

WEARABLE ART FASHION SHOW. Northwind will be sponsoring a Wearable Art Fashion Show **Thursday, October 23** at 1 pm at Market Place Gallery in Port Townsend. The committee working on the show is looking for volunteers to help with various tasks leading up to the show and during the show. It promises to be lots of fun. If you are interested, contact Anne Schneider at (360) 379-8752.

NORTHWIND REVISES Fashion Show Entry Guidelines. In deference to legitimate objections

expressed by potential exhibitors in the Wearable Art Runway Show & Market Place Gallery, Northwind has revised the Guidelines for entry. Additional charges for items submitted to the Runway Show are eliminated. The fee for photography is also eliminated. A photographer will be available, but photos will be optional and at the artists expense. Retail Store charges for the Market Place Gallery remain the same. The entry fee remains \$20 for up to three items to be considered for either the Runway show or the Market Place Gallery or both. The only fee that needs to be paid to enter and/or be accepted to the October 23 event is \$20. Entries must be received by June 30. For additional information, go to the Art Port Townsend website at artporttownsend.org.

ART OPPORTUNITIES & EVENTS

CORVIDAE PRESS will be hosting a free lecture and power point presentation by Elizabeth Dove, a Montana printmaker, photographer, installation artist and teacher on Friday, June 20 at 7:00 pm in Building 204 at Fort Worden. An internationally known and highly respected artist, Ms. Dove is an associate professor of art at the University of Montana. Samples of her work can be seen at her web site: elizabethdove.com In conjunction with the lecture she will give a printmaking demonstration on Saturday, June 21 at the Corvidae Press Studio in Building 205, Fort Worden. The cost is \$45. Because of space restraints, we must limit it to the first 12 people to register. For questions or registration, contact Jay Haskins, (360) 385-6389 or jhkapotso@olympus.net

An invitation to enter the LA CONNOR OUTDOOR SCULPTURE SHOW. This year the Arts Commission will be opening the Sculpture Exhibit in conjunction with **Art's Alive**, an art invitational and open exhibit held every year in Maple Hall on the first weekend in November. The sculptures will be on public display in the heart of La Conner, a charming 19th Century waterfront village that draws art collectors and tourists year round. For additional information, contact Margaret Carpenter Arnett at M2BEAR@aol.com.

